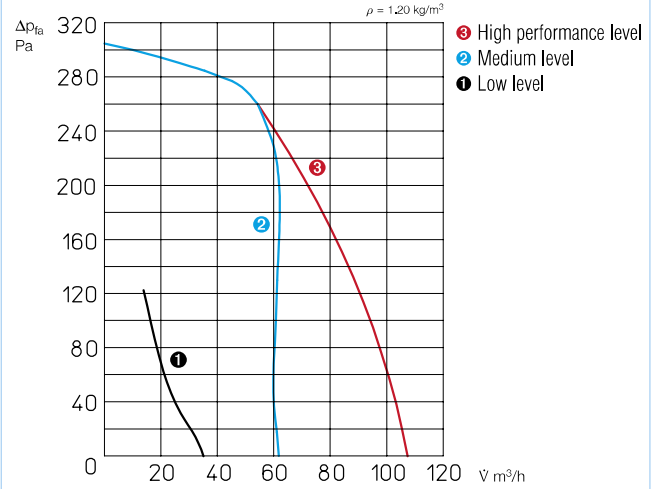
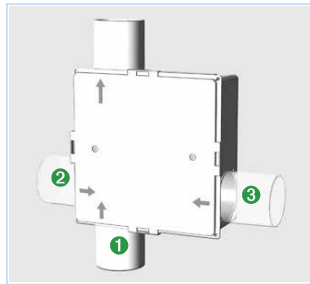
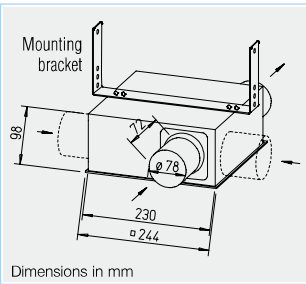


SVV 80



* Characteristic curve with factory connector position.



Connector position			Total output
No. 1	No. 2	No. 3	\dot{V} m³/h
35	45	45	125
65	closed	60	125
zu	45	75	120
50	60	closed	110
110*	closed*	closed*	110*
zu	zu	110	110
zu	100	zu	100

■ Volume output depending on number of inlet side connectors and position.

Description

- Flat casing in compact design made of high-quality, impact-resistant plastic. Suitable for the ventilation of wet rooms, toilets, etc. in industrial, commercial and residential buildings. Standard delivery with inlet and outlet side connectors for standard duct ϕ . One or two additional inlet connectors (accessories) can be inserted in the casing by removing the blind cover for the ventilation of multiple rooms.

- Plastic cover easily removable for removal of the volute casing.

Impeller

Energy-saving centrifugal impeller with forward curved blades made of high-quality plastic.

Motor

Enclosed, ball bearing mounted energy-saving motor, maintenance-free.

Motor protection

Through thermal overload protection in the winding.

Power control

Manual three level operation using DSEL 3. Medium or low performance level can be connected for continuous operation and switched using DSEL 2.

Electrical connection

Terminal box (IP 55) on outside of casing.

Installation

Possible in any position. The removable volute casing allows inspection and cleaning without dismantling the duct system. An inspection opening must be taken into account.

Protection category

IP 54 with connected duct system.

Delivery and accessories

Delivery includes mounting bracket as well as inlet and outlet side connectors. One or two additional inlet connectors (accessories, DN 75/80 mm) can be inserted in the casing by removing the blind cover.

ELS-ZAS Ref. no. 08184

Three level speed and operating switch with 0 position.

Convenient flush-mounted speed switch, Room light not switchable in parallel. Installation in flush-mounted switch box.

Dim. mm (WxHxD) 80 x 80 x 23

Type DSEL 3 Ref. no. 01611



Type	Ref. no.	Connection ϕ	Flow rate free blowing*	Rated speed*	Sound pressure level case radiation*	Sound pressure level Air noise inlet side*	Power consumption*	Current consumption*	Wiring diagram ¹⁾	Max. air flow temperature	Weight net approx.
		mm	\dot{V} m³/h	min ⁻¹	dB(A) at 3m / 1m	dB(A) at 3m / 1m	W	A	No.	+ °C	kg
Single phase Alternating current, 230 V, 50 Hz, IP 45											
SVV 80	02660	80	110 / 65 / 35	2710 / 1200 / 650	29/37 18/26 16/24	35/43 24/32 17/25	27 / 20 / 11	0.13 / 0.12 / 0.09	913	40	2.0

* Values refer to the three performance levels (see performance diagram). ¹⁾ With three level speed switch DSEL 3: Wiring diagram no. 914.