

# CJBD CJBD/AL

**CJBD: Soundproof ventilation units fitted with double-inlet fans, CBD series**

**CJBD/AL: Soundproof ventilation units with aluminium profiles fitted with double-inlet fans, CBD series**



CJBD



CJBD/AL

**Fan:**

- Galvanised sheet steel structure with thermal insulation and soundproofing.
- Impeller with forward-facing blades made from galvanised sheet steel
- Stuffing-box for cable input
- CJBD/AL: with aluminium profiles

**Motor:**

- Class F closed motors with incorporated thermal protector, ball bearings and IP-54 protection
- Single-phase 220-240V.-50Hz. and three-phase 220-240/380-415V.-50Hz.
- Max. air temperature to transport: -20°C.+ 60°C.

**Finish:**

- Anticorrosive galvanized sheet steel.

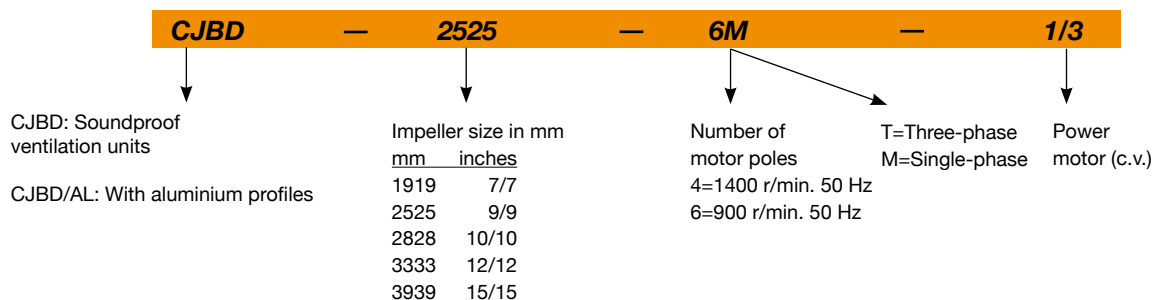
**On request:**

- With circular inlet



*CJBD: Includes base stand to aid installation*

## Order code



## Technical characteristics

Model		Speed (r/min)	Equiv. in Inches	Maximum admissible current (A)		Installed Power (kW)	Maximum Airflow (m³/h)	Sound pressure level dB(A)	Approx. weight (Kg)	
				230V	400V				CJBD	CJBD/AL
CJBD	CJBD/AL 1919-4M 1/5	1230	7/7	1.75		0.15	1520	58	19.4	22.5
CJBD	CJBD/AL 1919-6M 1/10	820	7/7	0.98		0.07	1230	53	19.4	22.5
CJBD	CJBD/AL 2525-4M 1/2	1320	9/9	3.30		0.37	2800	66	28.1	31.8
CJBD	CJBD/AL 2525-4M 3/4	1310	9/9	4.50		0.55	3600	70	28.9	32.6
CJBD	CJBD/AL 2525-6M 1/5	850	9/9	1.50		0.15	2200	59	26.4	30.1
CJBD	CJBD/AL 2525-6M 1/3	830	9/9	2.40		0.25	2700	61	27.6	31.3
CJBD	CJBD/AL 2828-4M 1/2	1320	10/10	3.30		0.37	2800	65	33.0	37.3
CJBD	CJBD/AL 2828-4M 3/4	1310	10/10	4.50		0.55	3950	70	33.8	38.1
CJBD	CJBD/AL 2828-6M 1/3	830	10/10	2.40		0.25	3200	61	32.5	36.8
CJBD	CJBD/AL 3333-6T 1 1/2	900	12/12	6.60	3.80	1.10	7800	74	47.9	53.8
CJBD	CJBD/AL 3333-6M 3/4	850	12/12	5.00		0.55	4900	63	46.4	52.3
CJBD	CJBD/AL 3333-6M 1	850	12/12	6.30		0.75	6000	70	47.4	53.3
CJBD	CJBD/AL 3939-6T 3	890	15/15	10.90	6.30	2.20	11900	74	71.8	80.0

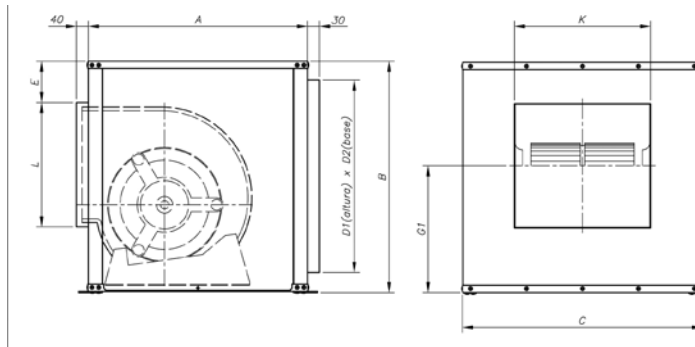
## Acoustic features

Sound power Lw(A) spectrum in dB(A) via frequency band in Hz.

Model	63	125	250	500	1000	2000	4000	8000	Model	63	125	250	500	1000	2000	4000	8000
CJBD-1919-4M 1/5	43	54	58	62	64	63	62	53	CJBD-2828-4M 3/4	55	66	70	74	76	75	74	65
CJBD-1919-6M 1/10	38	49	53	57	59	58	57	48	CJBD-2828-6M 1/3	46	57	61	65	67	66	65	56
CJBD-2525-4M 1/2	51	62	66	70	72	71	70	61	CJBD-3333-6T 1 1/2	59	70	74	78	80	79	78	69
CJBD-2525-4M 3/4	55	66	70	74	76	75	74	65	CJBD-3333-6M 3/4	48	59	63	67	69	68	67	58
CJBD-2525-6M 1/5	44	55	59	63	65	64	63	54	CJBD-3333-6M 1	55	66	70	74	76	75	74	65
CJBD-2525-6M 1/3	46	57	61	65	67	66	65	56	CJBD-3939-6T 3	61	72	77	81	83	81	80	71
CJBD-2828-4M 1/2	50	61	65	69	71	70	69	60									

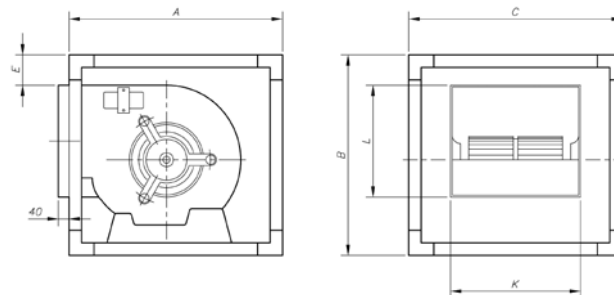
## Dimensions in mm

### CJBD



Model	Equiv. in Inches	A	B	C	E	D1xD2	G1	L	K
CJBD-1919	7/7	450	460	500	74	364x404	278	216	238
CJBD-2525	9/9	500	522	550	74	426x454	314	268	305
CJBD-2828	10/10	550	575	600	74	479x504	353	296	330
CJBD-3333	12/12	650	650	700	74	554x604	413	346	390
CJBD-3939	15/15	800	755	800	74	659x704	475,5	411	482

### CJBD/AL



Model	Equiv. in Inches	A	B	C	E	L	K
CJBD/AL-1919	7/7	460	460	460	75	216	238
CJBD/AL-2525	9/9	520	520	520	75	268	305
CJBD/AL-2828	10/10	575	575	575	75	296	330
CJBD/AL-3333	12/12	650	650	650	75	346	390
CJBD/AL-3939	15/15	755	755	755	85	411	482

## Characteristic Curves

See characteristic curves, CBD series.

## Accessories

See the accessories section.

